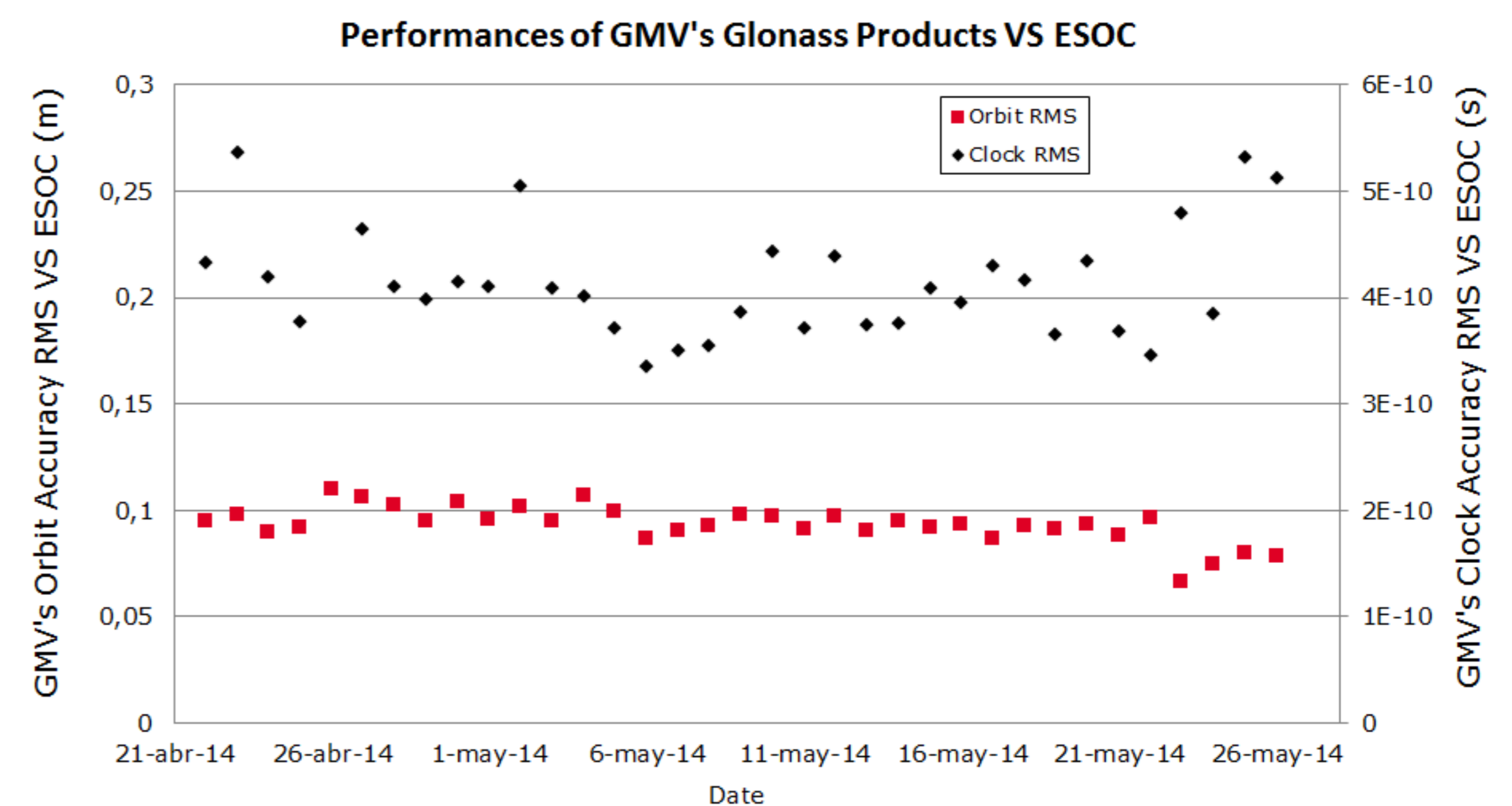
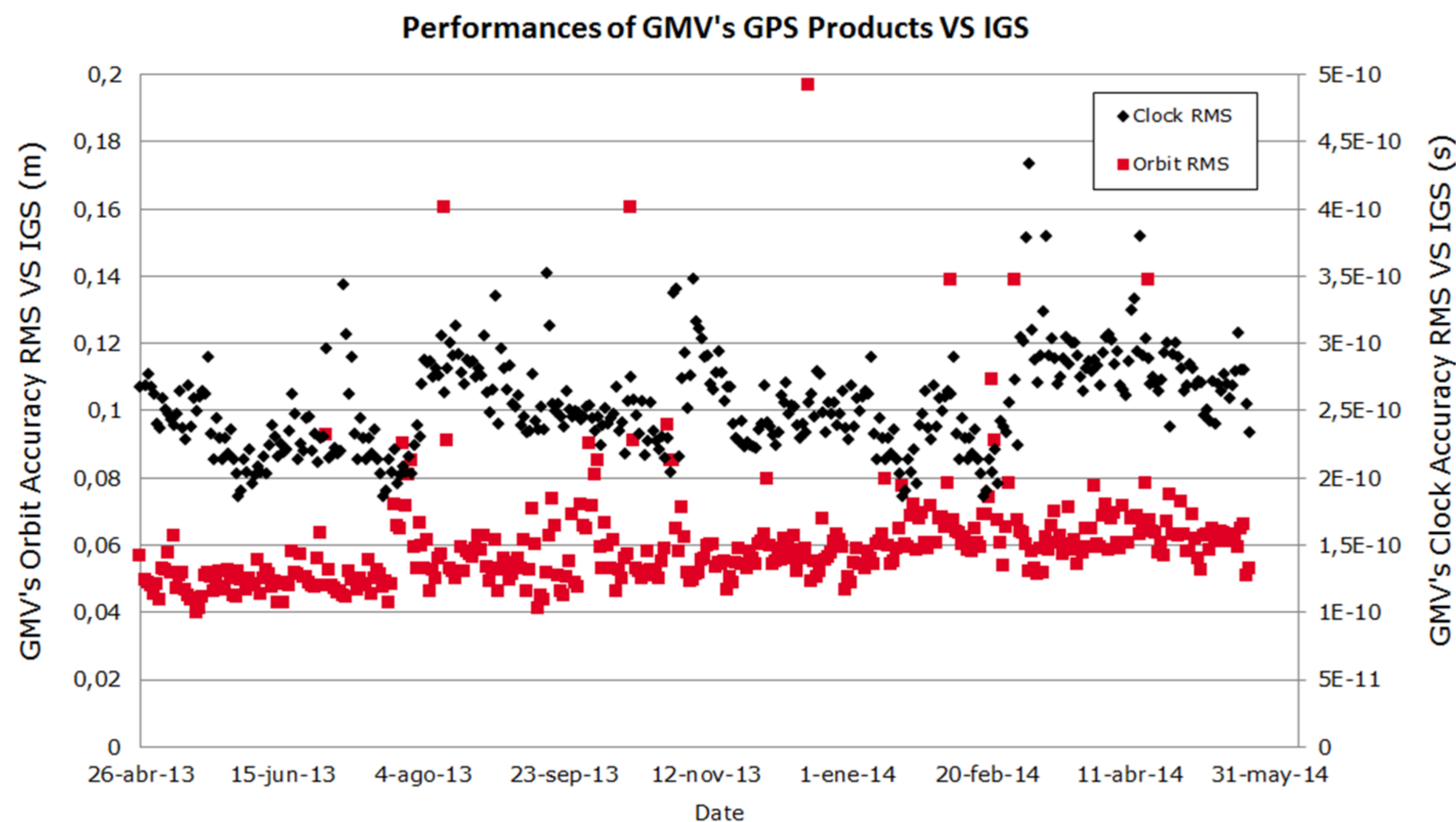


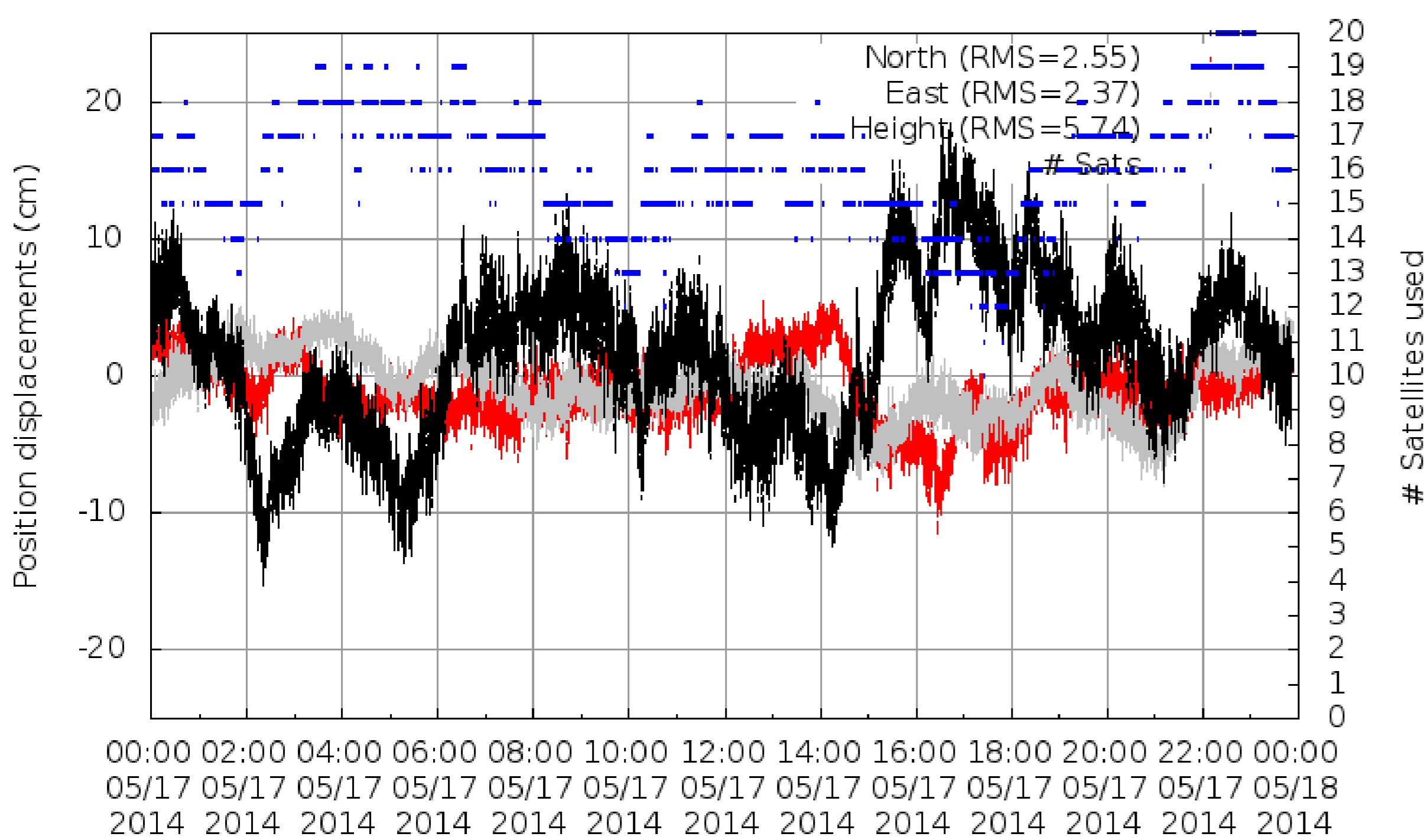
magicGNSS' CONTRIBUTION TO REAL TIME IGS SERVICE

HISTORICAL PERFORMANCES



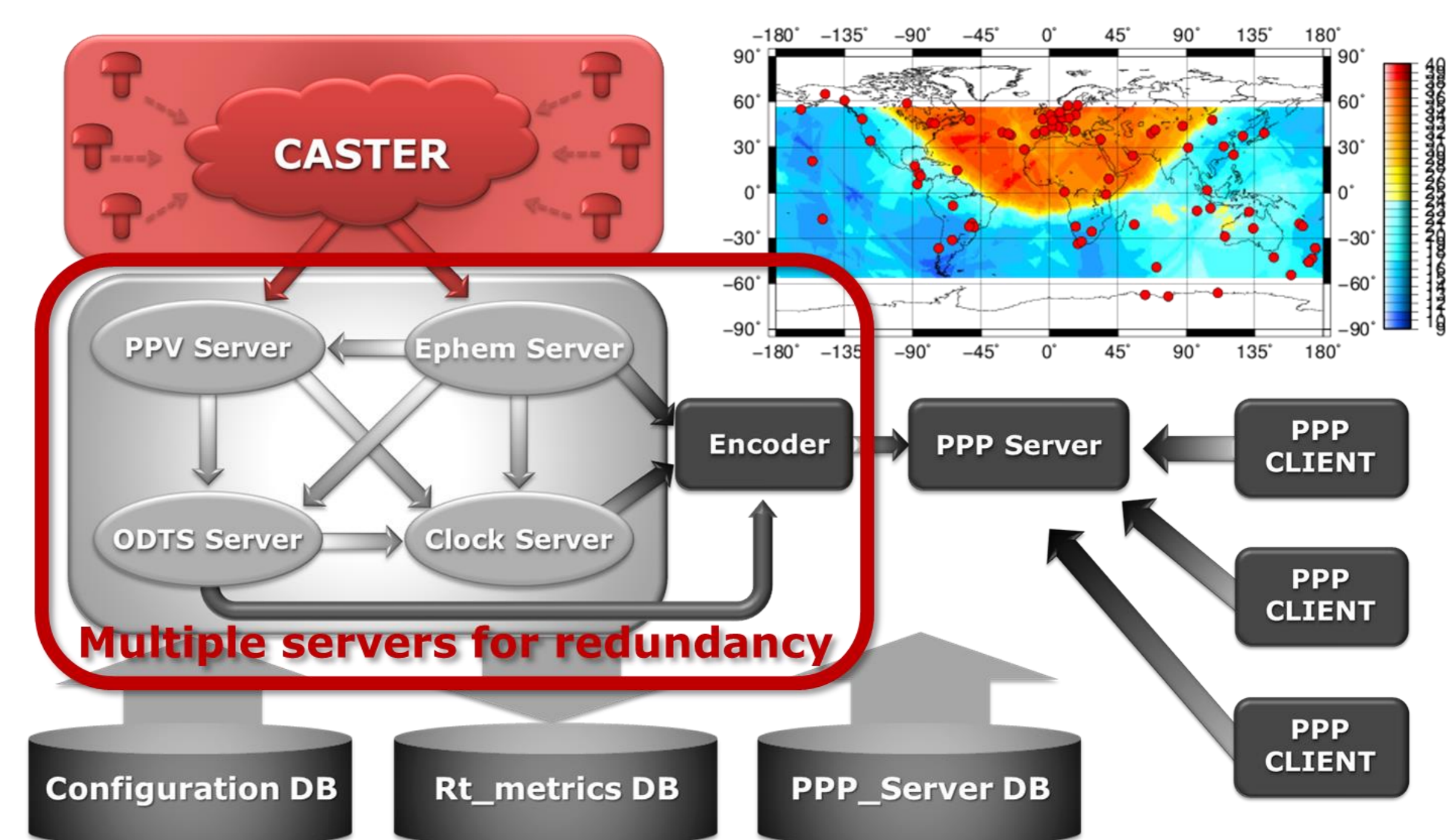
PROCESS ROBUSTNESS

- Server redundancy
- Product quality checks
- Notifications handling (NANUs, NAGUs, GSS outages)
- Online configuration (GSS changes)
- Storage of process indicators
- **Quality monitoring via RT PPP**



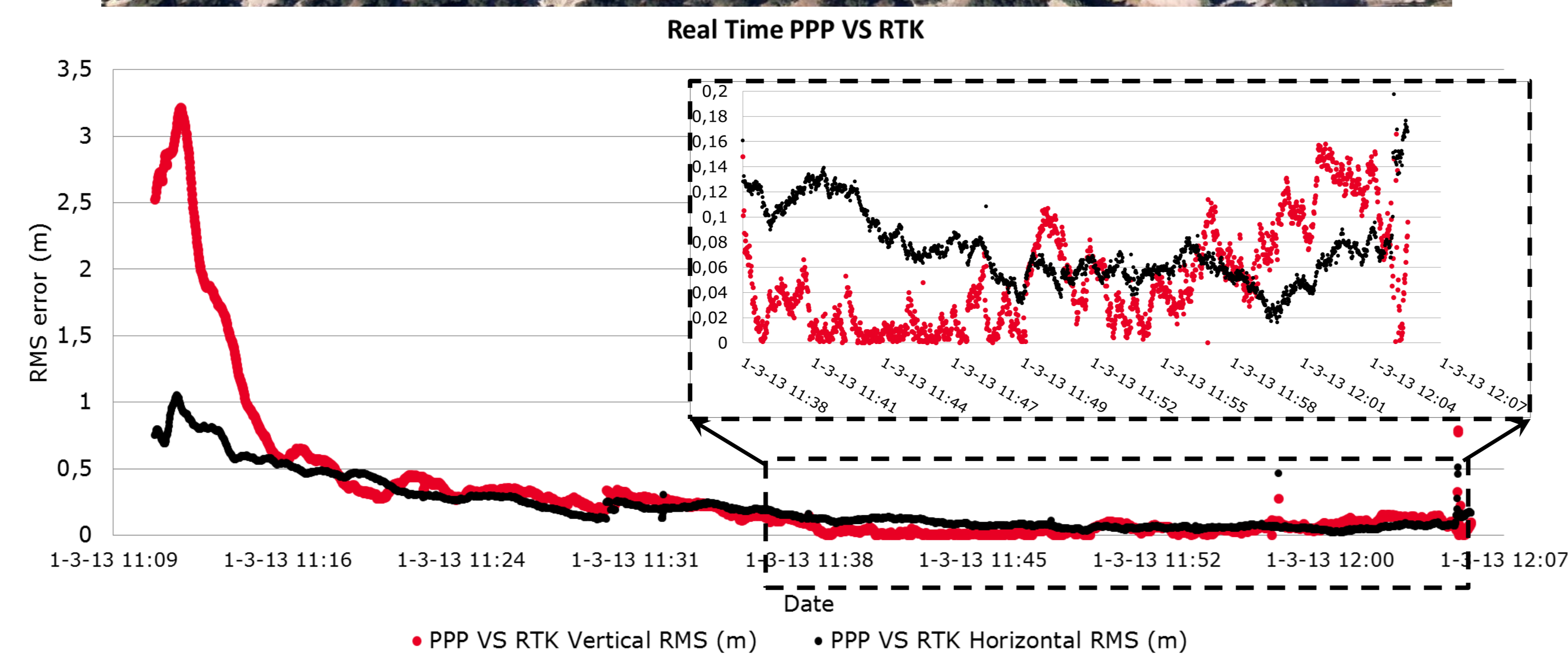
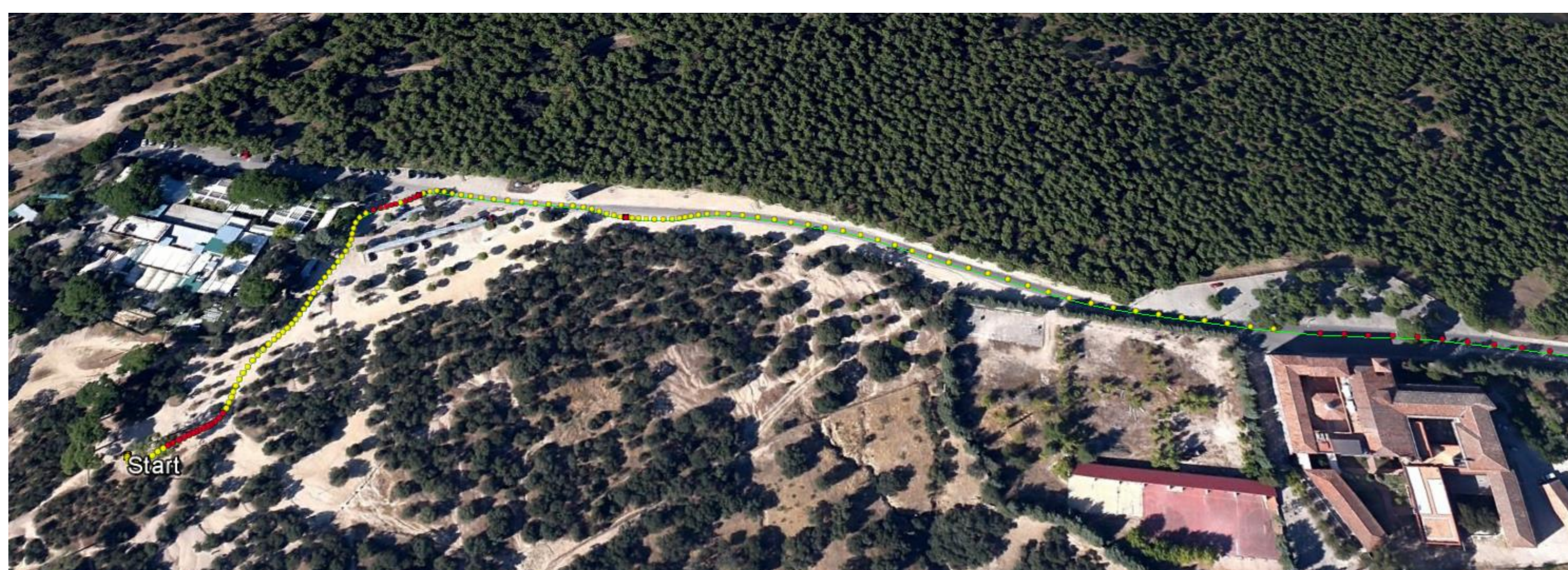
REFERENCE PRODUCTS

- GMV's contribution to Real Time IGS
- **GPS + GLONASS** combined process
- 80 IGS station network
- Orbit update every 15 minutes
- Clock estimation @ 1-sec rate
- RTCM ephemeris corrections



REAL TIME PPP PERFORMANCES

- Real Time testing on the field



- AC's products quality performances via GSS position monitoring by BKG (<http://igs.bkg.bund.de/ntrip/ppp>)

