



SPACE

GNSS trustworthy accurate correction service

What is GMV's correction service?

- Service provided by GMV **24/7, 365 days**, capable of providing accurate and reliable GNSS corrections and products.
- **Global GNSS Network** owned, operated and monitored by GMV.
- Service processing hosted within **redundant physical processing centers** on different continents.
- Worldwide coverage provision, **any time, anywhere**. Enhanced convergence time within Europe and North America regions.
- **Multi-constellation and multi-frequency**.
- Integrity Information for **Safety-Critical Applications**.
- **Security Layer**.
- **SSR20SR conversion capability** for RTK-solution fast integration.

GNSS trustworthy accurate correction service

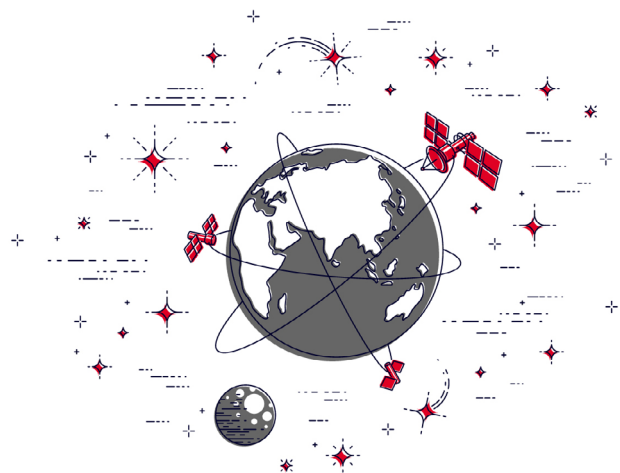
What makes our service different?

- **Flexible:** End user equipment not tied to service provision, no end-to-end dependencies or ties to a close solution; choose what better suits your needs!.
- **Standardized:** We are compliant with most open PPP standards; RTCM SSR, SPARTN, IGS-SSR. Missing one you need? Name it!
- **Will to improve:** Our engineering Support Team is not only there to assist you, but to gather your insights with the aim of move our service closer to the users' needs.

What is our commitment?

- GNSS Orbit Accuracy < 3 cm
- GNSS Clock Accuracy < 0,06 ns
- Horizontal Accuracy * < 3 cm (95%)
- Vertical Accuracy * < 6 cm (95%)
- Convergence Time < 30 s
- Integrity Risk < up to $10^{-7}/h$
- Service Availability > 99,9 %

* Nominal accuracy achieved with a geodetic GNSS receiver under open sky conditions at GMV's premises in Madrid



Applications & uses



HIGH ACCURACY SERVICE PROVIDERS



PUBLIC INSTITUTIONS



GNSS RECEIVER MANUFACTURERS



VEHICLE MANUFACTURERS